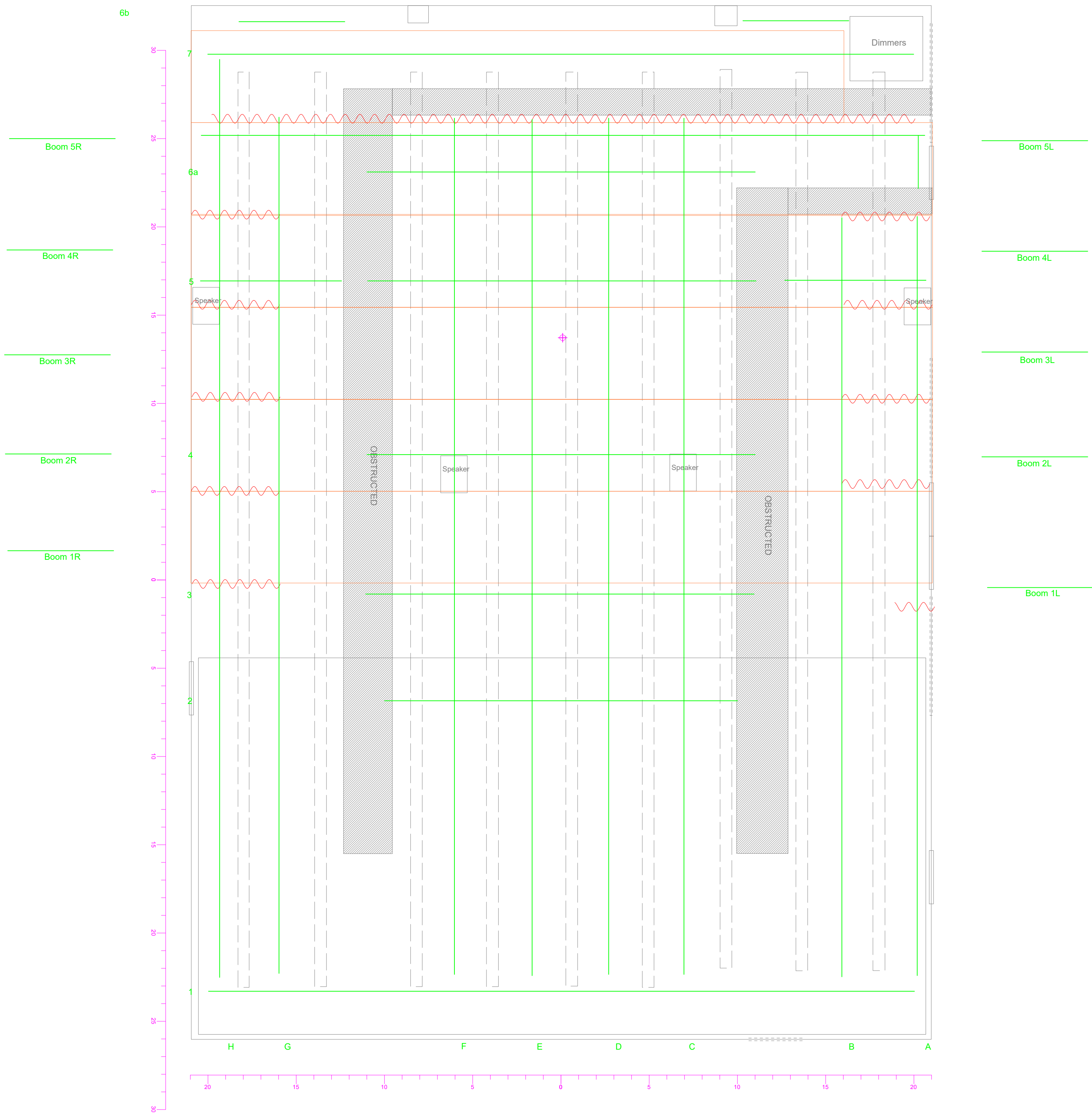




6b



**Legend**

Symbol	Type
	Dance Floor Panels
	Masking

**NOTES:**  
 12 spare 1.2k dimmers for specials (96 total)  
 Please consult venue for available lightig fixtures  
 TwoFers are according to Channel Numbers  
 Side Hang Booms  
 All Legs hang 5' out from wall; can be adjusted up to 10' from wall  
 All fixtures can have colours changed for your show.  
 The Booms can have colours changed during the performance  
 Please provide gobos as follows:  
 Altman Zooms: "B" size only  
 ETC Source 4's: "A" or "B" size - "A" size preferred  
 Consult venue for number of available holders in each size